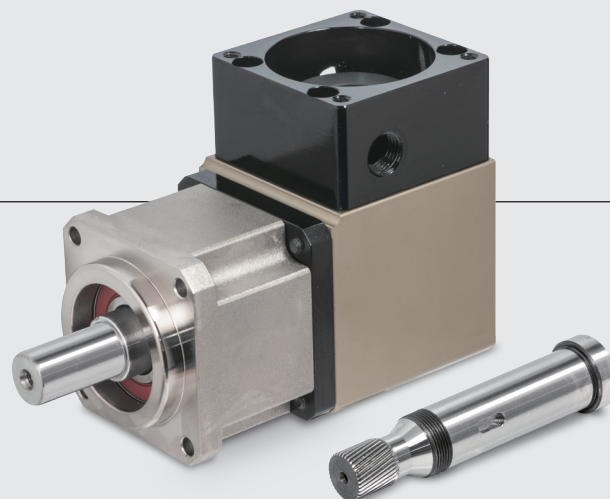


Model: **AR series**



Model: **ARB series**

轉角減速機

- 採用先進六軸精密機械加工，一次裝夾同時加工完成，確保最佳幾何精度。
- 傳動齒輪經精密研磨，運轉低背隙、高精度。
- 精密傳動、寂靜、穩定、順暢。流程：達到精密傳動，低噪音、高剛性等高品質要求。

Right Angle Reducer

- The right angle reducer is precision machined on a b-axis controlled machining center, which allows for one-piece machining in one setup to assure the best geometric accuracy.
- The transmission gears are precision ground, providing low rotating backlash and high accuracy.
- Precise transmission, low noise, maximum stability and smoothness.

型號識別 Model Identification

AR/ARB **42** **I** - **3**

1 2 3 4

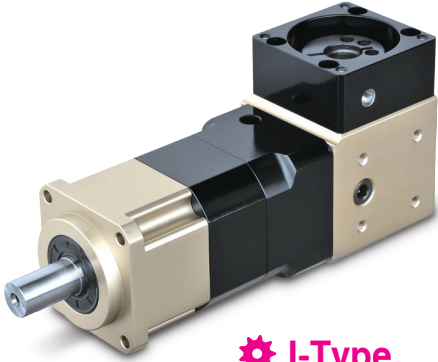
1. 減速機類別	Reducer type	直角減速機 Right Angle Reducer			
2. 框號	Frame No.	42 : 42 type	60 : 60 type	90 : 90 type	120 : 120 type
3. 馬達連接形式	Motor connection type	無 : 本體 No: body	I : 行星減速機 I : Planetary reducer	S : 行星減速機 S : Planetary reducer	
4. 減速比	Speed reduction ratio	2 : 1:2	3 : 1:3		

特性 Features:

- 本體結構紮實、體積小，有效節省安裝空間。
- 雖然體積小、重量輕。但具有高扭矩輸出及低背隙的優異特性。
- 訂購時請告知馬達法蘭及心軸尺寸。
- The reducer body is compactly constructed with small volume to save considerable installation space.
- Although the reducer is small in volume and light in weight, it is capable of providing high torque output and low backlash.
- When ordering, please advise the sizes of flange and shaft of your motor.

RIGHT ANGLE REDUCER

✿ 應用範例 Application Examples



✿ I-Type



✿ S-Type

Model	減速比 Speed Ratio		Model	減速比 Speed Ratio	
AR/ARB42 I	12, 15, 30	48, 60, 75, 90, 120, 150, 210, 270, 300	AR/ARB90 I	6, 10, 20, 30	40, 50, 60, 80, 100, 140, 180, 200
AR/ARB42 S	12, 15, 30	60, 75, 90, 120, 150, 210, 270, 300	AR/ARB90 S	6, 10, 20, 30	40, 50, 60, 80, 100, 140, 180, 200
AR/ARB60 I	6, 10, 20, 30	40, 50, 60, 80, 100, 140, 180, 200	AR120 I	6, 10, 20, 30	40, 50, 60, 80, 100, 140, 180, 200
AR/ARB60 S	6, 10, 20, 30	40, 50, 60, 80, 100, 140, 180, 200	AR120 S	6, 10, 20, 30	40, 50, 60, 80, 100, 140, 180, 200

✿ 規格表 Specifications

Model		AR-42	AR-60	AR-90	AR-120
額定輸出轉矩	Continuous output torque	1.5 kgf.m (15 N.m)	4.5 kgf.m (45 N.m)	9 kgf.m (90 N.m)	12 kgf.m (120 N.m)
破壞力矩值	Breakdown torque	4 kgf.m (40 N.m)	12 kgf.m (120 N.m)	24 kgf.m (240 N.m)	32 kgf.m (320 N.m)
許用輸入轉速	Permissible input speed	2000 rpm	2000 rpm	2000 rpm	2000 rpm
背隙	Backlash	10~3 min-arc	10~3 min-arc	10~3 min-arc	10~3 min-arc
慣性矩	Moment of inertia	0.02 kg·cm ²	0.7 kg·cm ²	0.25 kg·cm ²	0.8 kg·cm ²
重量	Weight	0.5 kg	1.2 kg	3.6 kg	8.5 kg

Model		ARB-42	ARB-60	ARB-90
額定輸出轉矩	Continuous output torque	1.5 kgf.m (15 N.m)	4.5 kgf.m (45 N.m)	9 kgf.m (90 N.m)
破壞力矩值	Breakdown torque	4 kgf.m (40 N.m)	12 kgf.m (120 N.m)	24 kgf.m (240 N.m)
許用輸入轉速	Permissible input speed	2000 rpm	2000 rpm	2000 rpm
背隙	Backlash	10~3 min-arc	10~3 min-arc	10~3 min-arc
慣性矩	Moment of inertia	0.02 kg·cm ²	0.7 kg·cm ²	0.25 kg·cm ²
重量	Weight	0.5 kg	1.2 kg	3.6 kg